

PRODUCT SPECIFICATION

instaCELL Cytotoxicity Assay Kit (L929/Resazurin)

CatN^o: SF020

Lot#: 92-191107JP01

PRODUCT DEFINITION

Test kit to assess the cytotoxicity or biocompatibility of chemicals and leachable by their application to cultures mammalian cells and the subsequent determination of cell viability.

CONTENT OF THE KIT

- Frozen Instant Cells. Assay ready cryopreserved cells as a single cell suspension in RPMI 1640 based cryopreservation medium containing 10% fetal bovine serum and 5% DMSO.
- recovery buffer (RPMI 1640 based)
- assay medium A (RPMI 1640 based, contains 10% FBS) in adjusted aliquots
- assay buffer A (RPMI 1640 based, contains 10% FBS)
- resazurin solution (resazurin in PBS)
- toxic control (sodium selenite in PBS)
- 96-well assay plates

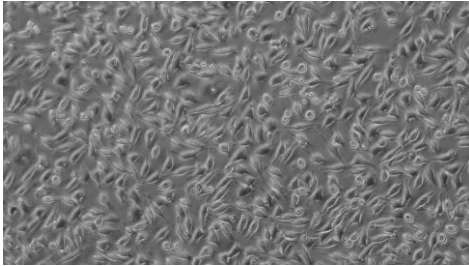
QUALITY SPECIFICATION

	Batch Quality Control	Specification Limits
Cell Count ¹	1.03E+07	9.00E+06 < > 1.20E+07
Viability (after thawing) ¹	97 %	≥ 90 %
Proliferative Capacity ⁵	89%	≥ 80%
Debris/Cell Ratio ¹	0.1	≤ 0.4
Aggregation ¹	1.3	≤ 1.8
Sterility (bacteria, yeast, fungi) ²	Negative	negative after 4 days
Sterility (mycoplasma) ³	Negative	negative by PCR
Morphology	Unsuspectious	unsuspectious
Cytotoxicity Assay (max signal) ⁴	25591 RFU	22000 RFU < result > 34000 RFU (of reference experiment)
Cytotoxicity Assay (IC50 reference substances) ⁴	A: 0.88 M B: 9.35E-3 M C: 1.40E-5 M	A: 0.72 M < x < 1.5 M B: 7.2E-3 M < x < 1,5E-2 M C: 7.2E-4 M < x < 1,5E-6 M
Cytotoxicity Assay (Z') ⁴	0.74	> 0.5

¹: as determined by CASY TT cytometer, ²: by microscopic/visual control after four days of culture in the absence of antibiotics, ³: as determined in the cell culture supernatant after four days of cultures by PCR, ⁴: dose response of three reference compounds (A: Glycerol, B: Antipyrine, C: Sodium Selenite) performed according to the assay protocol. ⁵ Proliferative Capacity shows the percentage of cell activity 72 hours after seeding in relation to cells from continuous culture (100%). Both types were seeded with the same cell density at t=0.

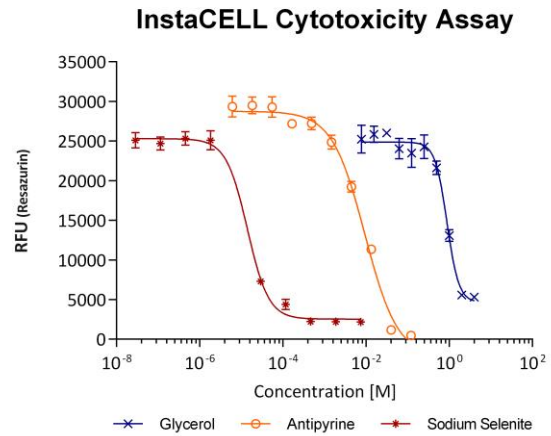


MORPHOLOGY



Morphology of cells 24 hours after seeding

CYTOTOXICITY ASSAY



Dose response of three reference compounds (A: Glycerol, B: Antipyrine, C: Sodium Selenite) performed according to the assay protocol.

STABILITY

After receipt:

- 4 weeks below -70°C
- 6 months below -150°C (e.g. in liquid nitrogen)

Keep strictly on dry ice before thawing during inner company transportation

LIMITED USE

The product is provided under the terms of a limited use license provided with kit. By breaking the sealed bag, the user is explicitly accepting the terms for limited use.

